



VIRON CONNECT 10  
POOL AND SPA CONTROLLER

## Updating the Colour Touch Firmware



**Melbourne:** 03 8796 8600  
**Sydney:** 02 9853 2100  
**Brisbane:** 07 3308 5400

**Gold Coast:** 07 5552 2600  
**Townsville:** 07 4796 0100  
**Adelaide:** 08 8152 7600

**Perth:** 08 9350 2600  
**sales@astralpool.com.au**  
**www.astralpool.com.au**

# Updating the Colour Touchscreen Firmware

The Colour Touchscreen firmware can easily be updated using a USB cable and a PC.

Version 1.4 or greater is required to operate with the Internet Gateway.

During the upgrade, all user settings are lost. Attachment A can be used to record the critical settings prior to the upgrade, to assist in setup.

Record the setup for the current system on the Attachment A Form

1. Download the latest firmware from

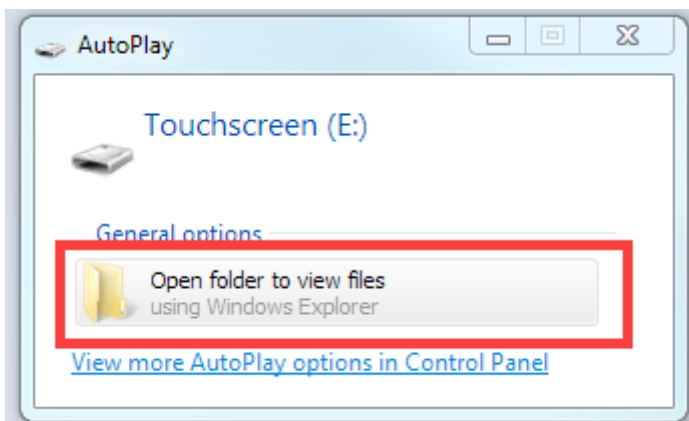
<http://www.astralpool.com.au/products/viron-connect-10-pool-spa-controller>

by clicking on the Download Colour Touchscreen Firmware to a convenient location like your Downloads folder.

2. **Remove Touchscreen from wall and disconnect RJ12 cable**

**Do not attempt to reprogram the Touchscreen whilst still connected to the pool network. It could result in damage to the touchscreen and/or the computer**

3. **Connect USB cable to CN6 on the touchscreen and plug in to a USB on your PC**
4. **Copy new software to touchscreen**



Depending on the version of windows, the Auto play screen may appear for the touchscreen.

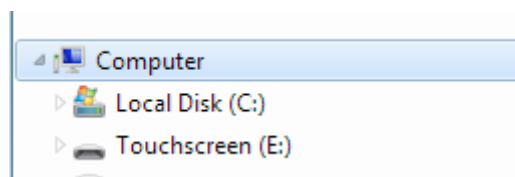
**NOTE:** The drive letter (E: in this example) may vary depending on your computer configuration.

Select Open folder to view files

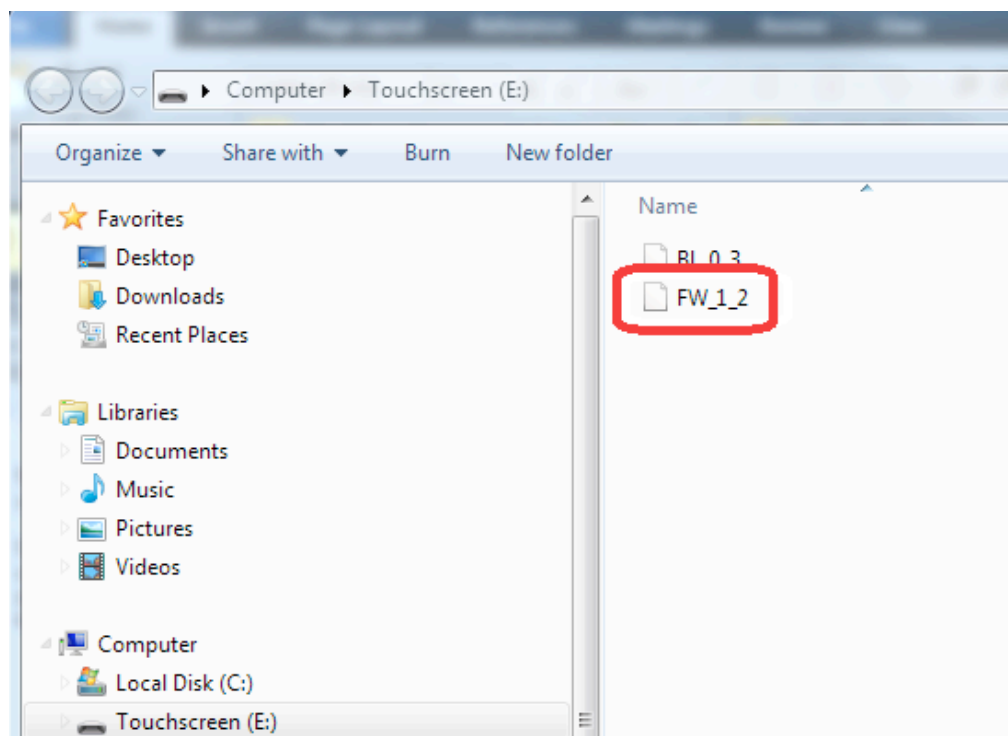
If the Auto play screen does not appear, double click on the computer icon



Find the touchscreen in the list of your storage devices and double click on it



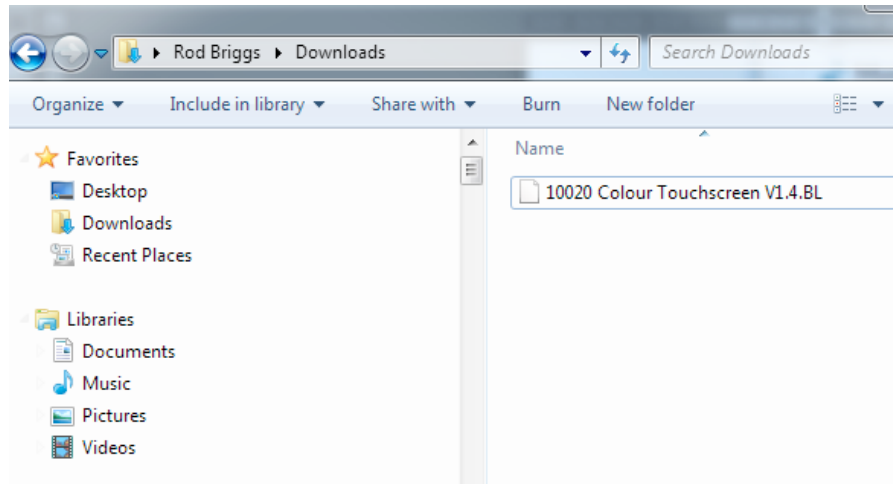
The file FWxxxx is the firmware of the Touchscreen, where xxxx is the software version (1.2 in the example below)



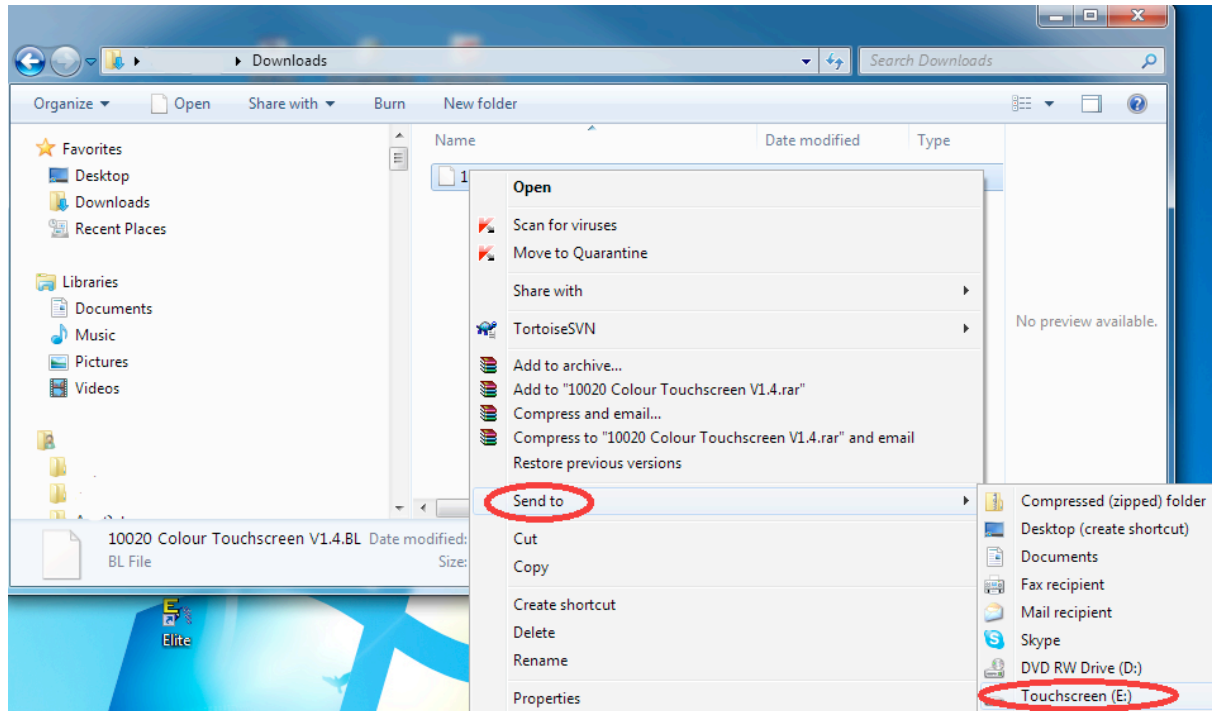
Take note of the drive letter for the touchscreen.

## 5. Copy new software to touchscreen

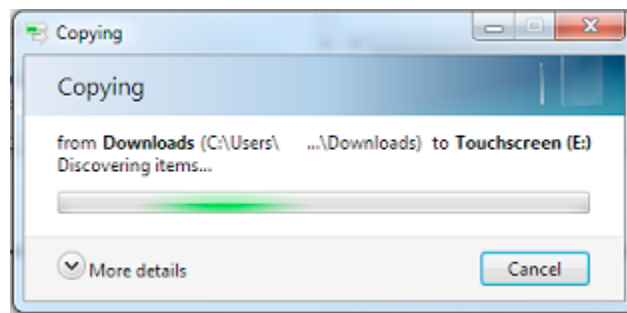
Go to the downloads folder and right click on the touchscreen firmware you downloaded from the Astralpool Web Site.



Select **Send to** and click on the drive letter of the Touchscreen (E: in this example)



The firmware will update



The file will be copied to the touchscreen and the update will be performed.





(b)Timer Setup

Setup								
Timer	Enabled / Disabled	Start Time	Stop time	Pool or Spa Mode	Equipment to Operate	Pump Speed	Heater On or Off	Lighting Zones
1	Enabled	____:____	____:____	POOL	_____	Low	On Off	_____
	Disabled			SPA		Medium High		
2	Enabled	____:____	____:____	POOL	_____	Low	On Off	_____
	Disabled			SPA		Medium High		
3	Enabled	____:____	____:____	POOL	_____	Low	On Off	_____
	Disabled			SPA		Medium High		
4	Enabled	____:____	____:____	POOL	_____	Low	On Off	_____
	Disabled			SPA		Medium High		
5	Enabled	____:____	____:____	POOL	_____	Low	On Off	_____
	Disabled			SPA		Medium High		
6	Enabled	____:____	____:____	POOL	_____	Low	On Off	_____
	Disabled			SPA		Medium High		
7	Enabled	____:____	____:____	POOL	_____	Low	On Off	_____
	Disabled			SPA		Medium High		
8	Enabled	____:____	____:____	POOL	_____	Low	On Off	_____
	Disabled			SPA		Medium High		

Available from:



 FLUIDRA GROUP

**Melbourne:** 03 8796 8600  
**Sydney:** 02 9853 2100  
**Brisbane:** 07 3308 5400  
**Gold Coast:** 07 5552 2600

**Townsville:** 07 4796 0100  
**Adelaide:** 08 8152 7600  
**Perth:** 08 9350 2600  
**sales@astralpool.com.au**

[www.astralpool.com.au](http://www.astralpool.com.au)



[facebook.com/astralpoolAU](https://facebook.com/astralpoolAU)