

Modern Slavery Statement

2020



Contents

About us	3
Our Vision and Values	3
2020 Modern Slavery Risk Management Initiatives.....	4
Our Plans for 2021.....	4
Our Plans Beyond 2021.....	4
Statement from Martin Bowles, National CEO, Little Company of Mary Health Care	5
Reporting Criteria 1 & 2: About Calvary.....	6
Our Organisational Structure.....	6
Our Governance Framework.....	7
Our Operations	7
Our Supply Chain.....	7
Reporting Criteria 3: Modern slavery risks in operations and supply chain.....	8
Operational Risks.....	8
Our COVID-19 Response	8
Our People	10
Modern Slavery Gap Analysis.....	10
Supply Chain Risks.....	11
Reporting Criteria 4: Actions taken to assess and address risk.....	12
Modern slavery action plan and road map	12
Reporting Criteria 5: Effectiveness Assessment.....	15
Reporting Criteria 6: Process of consultation with entities owned or controlled.....	15
Reporting Criteria 7: Other relevant information.....	15

Disclosure Note

This statement has been made on behalf of Little Company of Mary Healthcare Ltd. This Statement covers all entities owned or controlled by Little Company of Mary Healthcare Ltd.

Cover: Calvary Mater Newcastle.

About us

Calvary has provided health care to the most vulnerable Australians, including those reaching the end of their life, since the arrival in Australia of the Sisters of the Little Company of Mary in 1885. We are a charitable Catholic not-for-profit organisation operating across six states and territories in Australia with 14 public and private hospitals, 17 Retirement and Aged Care facilities, and a national network of Community Care centres.

The Spirit of Calvary expresses how we care for each other, and how we care for our patients, our residents and our clients by 'Being for Others'.

- Everyone is welcome
- You matter. We care about you
- Your family, those who care for you, and the wider community we serve, matter
- Your dignity guides and shapes the care we offer you
- Your physical, emotional, spiritual, psychological and social needs are important to us
- We will listen to you and to those who care for you
- We will involve you in your care
- We will deliver care tailored to your needs and goals
- Your wellbeing inspires us to learn and improve.

Our Vision and Values

As a Catholic Health, Community and Aged Care provider, our vision is to excel, and to be recognised, as a continuing source of healing, hope and nurturing to the people and communities we serve.

We bring the healing ministry of Jesus to those who are sick, dying and in need through "being for others":

- in the Spirit of Mary standing by her Son on Calvary;
- through the provision of quality, responsive and compassionate health, community and aged care services;
- based on Gospel values; and
- in celebration of the rich heritage and story of the Sisters of the Little Company of Mary.

Our Values are visible in how we act and treat each other. We are stewards of the rich heritage of care and compassion of the Little Company of Mary. We are guided by the values of Hospitality, Healing, Stewardship, and Respect.

ABN: 11 079 875 697



Calvary Adelaide Hospital, South Australia.

2020 Modern Slavery Risk Management Initiatives

Calvary has continued to build on the road map started in prior years to address the risk of slavery in our supply chain. In the 2020 reporting period we have:

- Implemented compulsory training for our procurement staff on Modern Slavery
- Continued to educate our suppliers on our expectations around modern slavery risk management
- Met with our top tier suppliers to communicate and enforce our requirements for modern slavery risk management in our operations and supply chain
- Provided information to all Calvary suppliers of our Modern Slavery Policies
- Strengthened our documentation, policies and risk framework, requiring contracted suppliers adhere to Calvary's ethical sourcing policies and business partner's criteria
- Documented a deeper understanding of our supply chain modern slavery risk profile, including heat mapping of the risks within our supply chain
- Conducted Supplier modern slavery assessment for our top tier and high risk suppliers
- Directed our suppliers to training programs within the building and construction categories.

Our Plans for 2021

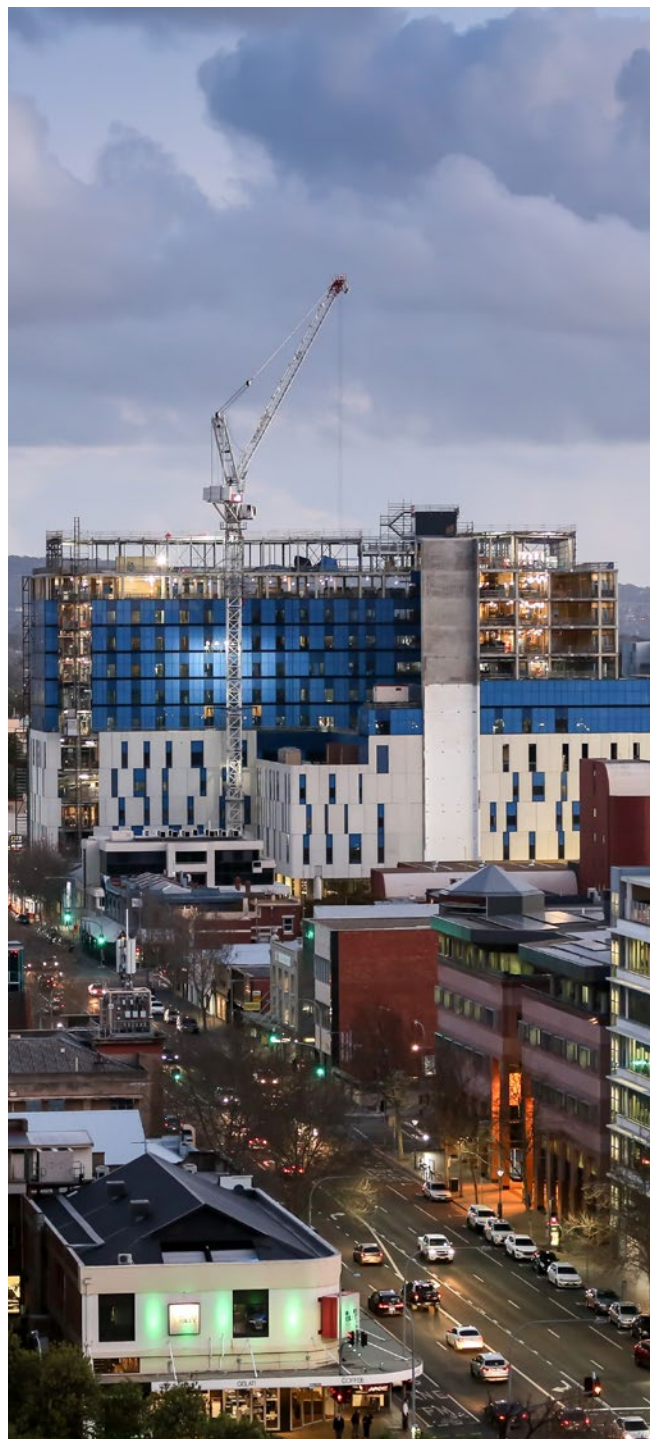
In 2021, we plan to build on the risk management initiatives we have implemented in 2020 by:

- Continuation of our long term road map, to strengthen our risk management of our supply chains
- Build on our Supplier Relationship Management program, to gain a better understanding of our supplier's approach towards managing the risk of modern slavery in our combined supply chain
- Continuation of supplier surveys and remedial work where responses do not meet our evaluation criteria
- Expanding our program with a greater number of our suppliers who operate in high risk sectors
- Development of a whistle-blower hotline for workers, contractors, and sub-contractors
- Building our staff awareness initiatives, through additional training and materials
- Continuously review the effectiveness of our actions in addressing the risk of modern slavery
- Undergo a second Gap Analysis to determine the effectiveness of the actions taken during the reporting period.

Our Plans Beyond 2021

Beyond 2021, we will:

- Continuously improve our due diligence in modern slavery risk management, encouraging our supply base to improve their risk management programs
- Conduct random audits of high risk suppliers
- Expand our supply chain mapping and update our risk profile, expanding our Modern Slavery program accordingly.



Calvary Adelaide Hospital during construction.



Martin Bowles AO PSM, National Chief Executive Officer.

Statement from Martin Bowles, National CEO, Little Company of Mary Health Care

In 2020, Calvary celebrated 135 years of providing quality, compassionate health care to the most vulnerable, including those reaching the end of their life. It was a year like no other in recent memory, where businesses, governments and entire populations came together to address a rapidly evolving health crisis. In Australia, and other countries, such as New Zealand, we have continued to demonstrate that by uniting our efforts, we have a much greater ability to address the significant global challenges of our time.

At the end of 2020, perhaps more so than in other years, I am reminded of the Venerable Mary Potter, who, in 1877, founded the Sisters of the Little Company of Mary and began working with women, children and men in Hyson Green, Nottingham, UK. Many of these folk struggled because of poor working conditions, servitude and lack of health care. I am reminded of the six courageous Sisters of the Little Company of Mary, who sailed from Naples to Sydney on the SS Liguria, arriving on 4 November 1885. The very day after they arrived in Australia they began to provide care to the sick, the vulnerable, and to those who were dying.

The work we do today is the same. Our mission extends beyond our direct patients, clients, and residents. It extends to our staff, volunteers, suppliers, contractors, and anyone who provides material support to our business. Calvary maintains a zero tolerance policy to modern slavery in our supply chain and operations, yet enforcing this comes with very significant challenges. Victims of modern slavery exist within complex

supply chains, extending across national borders. They are concealed, hidden in the materials which may be moving through our hospitals, and our facilities.

Achievements this year are detailed in this report, which include the introduction of mandatory training for our procurement staff, raising awareness with our suppliers, and significantly increasing collaboration with other Catholic entities, such as through ACAN and the Catholic Negotiation Alliance.

We have much work left to do, but as we unite our efforts across industries and government, we have a far greater chance of eliminating this atrocity within our lifetimes.

This Modern Slavery Statement has been approved and endorsed by Little Company of Mary Health Care Ltd on 25 March 2021.

Jim Birch AM
Chair, LCMHC

Martin Bowles AO PSM
National Chief Executive Officer

Reporting Criteria 1 & 2: About Calvary

Our Organisational Structure

Little Company of Mary Health Care Limited and its subsidiaries (trading as Calvary) are charitable not-for-profit public companies limited by guarantee, registered under the Corporations Act 2001.

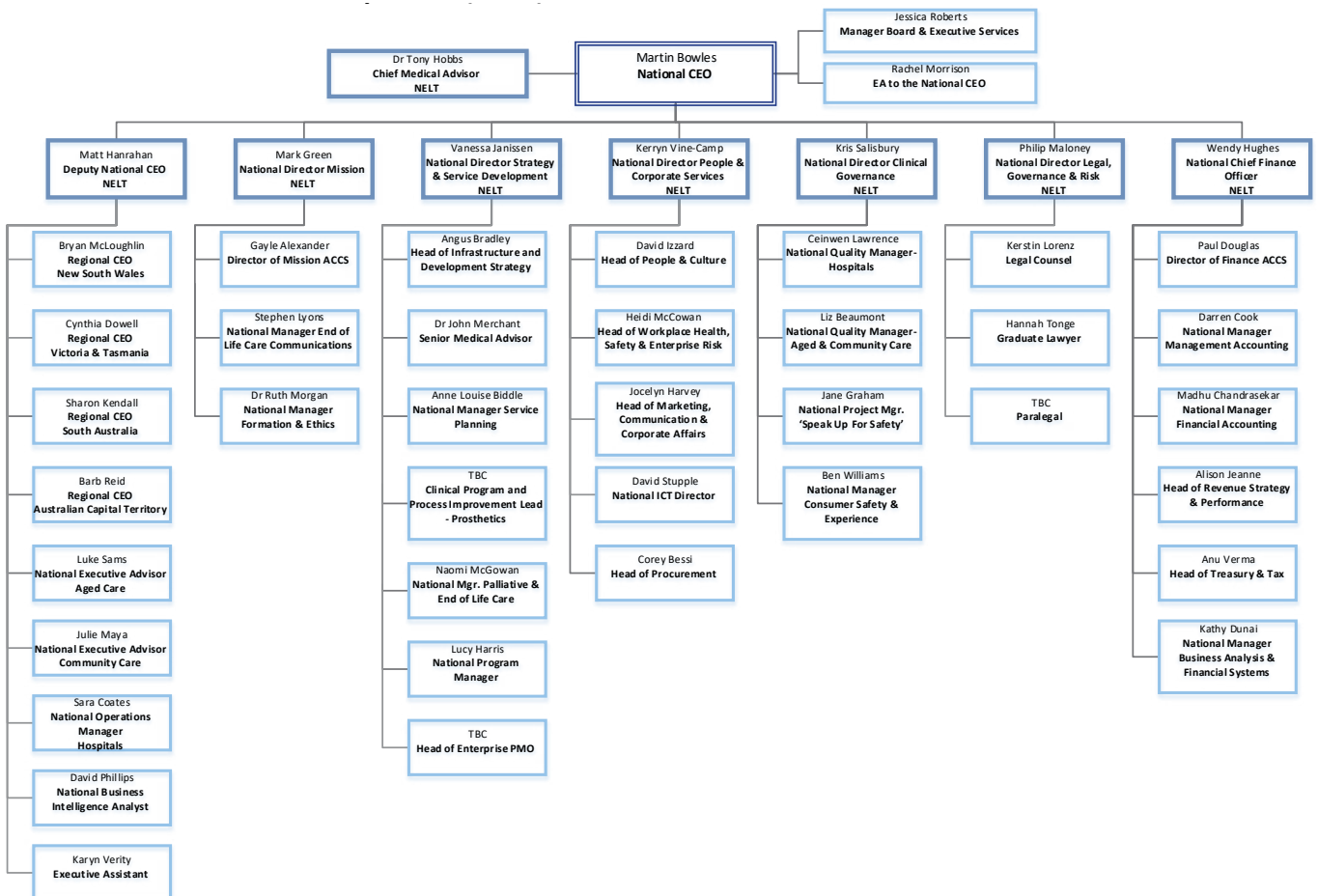
Calvary's Board of Directors is chaired by Mr Jim Birch AM. Calvary Ministries exercises a stewardship role over the health, aged and community care programs and services conducted by LCMHC and its subsidiaries, to improve the health and well-being of the communities they serve. Details of Calvary Ministries and our Board of Directors can be found in our Annual Report 2020.

Our National Executive Leadership Team, under National CEO, Martin Bowles AO PSM, oversees Calvary's strategic intent, and delivers on Calvary's mission of Hospitality, Healing, Stewardship and Respect.

Calvary operates as a parent company (Little Company of Mary Healthcare Pty Ltd), with hospitals, Retirement Communities and Community Care services as controlled entities.

Jim Birch AM at the Calvary Adelaide Hospital Opening Service.

National Executive Leadership Team (NELT)



Our Governance Framework

As a provider of healthcare to the Australian community, Calvary operates under a strong corporate governance framework, underpinned by our mission and values. Calvary's modern slavery initiatives are overseen by the National Director of People and Corporate Services, and the National Director of Mission, reporting to the LCMHC Board, through the National Executive Leadership Committee. Under their guidance the teams ensure that skills and resources can be accessed throughout the business, such as Human Resources, Procurement, Legal, and Training and Development teams.

In 2018 Calvary established a modern slavery steering committee, with representation strategically selected from a cross section of business units who were well positioned to enable rapid changes to policy, process, and mandated activities. The steering committee developed non-negotiable criteria for business partners which were approved by the Board in 2018.

Our Operations

Calvary operates 14 Public and Private Hospitals, 17 Retirement and Aged Care Facilities and a national network of Community Care Centres around Australia. Calvary's head office is located at Level 12 - 135 King Street Sydney NSW 2000, with a team of nearly 12 thousand employees, in FY 20 Calvary delivered care to over 550,000 hospital outpatients, conducted 118,000 surgical procedures, provided home care services to over 9000 Community Care clients and residential aged care services to more than 1000 residents. In 2020, revenue from our operations was \$1,385,102,000.

Calvary has four public and ten private hospitals that provide acute and sub-acute care. Our hospitals cover broad geographical regions in TAS, SA, NSW, VIC, and ACT. Calvary Community Care has been supporting people in their own homes and communities for over twenty years in TAS, SA, NT, NSW, VIC, and ACT. We deliver a range of aged care, disability and other support services that enable independence, improve social connections and promote positive health and wellbeing. Calvary Retirement Communities provides quality care and services within a supportive environment in which residents are respected for their individuality. Calvary Retirement Communities has 14 residential care facilities and three stand-alone independent living villages across NSW, SA and the ACT.

In order to resource the many areas of our business, our direct supply chain consists of a range of large multinationals and small, local business, who provide our services with medical and surgical supplies, pharmaceuticals, energy, food and beverages, and ICT hardware and software.

A significant focus over the reporting period was the delivery of the organisational restructure to move to a fully regionalised model. This move was implemented in May 2020, combining operational structures across hospitals, aged and community care to support a more integrated regionally coordinated Calvary care system across all services. This will enable us to deliver seamless, safe and quality care, tailored to individual and community needs.

Our Supply Chain

As a multifaceted healthcare organisation operating throughout Australia our supplier base is diverse, ranging from large multinational organisations with highly diverse supply chains through to sole traders delivering site specific services.

During the 2020 reporting period Calvary engaged with a total of 4,701 suppliers.

We procure goods and services in the following primary spend categories:

Calvary's expenditure on externally sourced goods and services in 2020 was \$630 million dollars, which is managed and administered under 120 core contracts.

In order to effectively manage security of supply Calvary operates a "multi region multi supplier sourcing strategy". This strategy in conjunction with the broad range of medical consumables required for our day to day operations dictates that we engage with suppliers both locally and internationally. Manufacturing facilities for the goods used in our day to day operations are heavily concentrated in China, Europe, and the USA.

Indirect	Direct
Recruitment and Agency	Drugs and Pharmaceutical Services
Professional Services	Clinical Services (e.g. Pathology, Allied Health)
Facilities Management	Major Medical Equipment
ICT	Medical and Surgical Supplies
Logistics	Prosthetics



Ashleigh Shoults, Registered Nurse, Emergency Department at Calvary Mater Newcastle, New South Wales.

Reporting Criteria 3: Modern slavery risks in operations and supply chain

We believe that the importance of a modern slavery program extends beyond an organisation's legal accountabilities. Ensuring that modern slavery does not exist in our supply chain or operations aligns with our core values and mission as a care giving organisation.

Our efforts in 2020 and in prior years have been focused on fostering a transparent and collaborative relationship between ourselves and our suppliers, educating our staff to understand and recognise the risks and building systems and processes to allow for the reporting and escalation of any suspected or observed risks.

Calvary is a member of the Australian Catholic Anti-Slavery Network (ACAN). We believe that combining our efforts with other like-minded organisations in our business sector will deliver the greatest impact in the shortest time.

The supplier heat map mapping and supply chain investigations that we conducted with ACAN have enabled us to identify key risks and areas of focus, develop an effective response and build plans for the future, which are contained in this report.

Operational Risks

Our COVID-19 Response

This year, Calvary has been challenged in new and unprecedented ways. 2020 will be remembered as the year of the COVID-19 pandemic and the cause of the most serious public health emergency in Australia since the Spanish Flu.

Like many other organisations, we experienced significant supply chain disruptions with our contracted and uncontracted suppliers alike, and their ability to fulfil our requirements for Personal Protective Equipment (PPE) and other clinical products. This required us to look beyond our normal supply lines and establish relationships with alternative suppliers operating in high risk product categories.

Calvary's early work on managing modern slavery risks was able to be rapidly deployed and integrated within our COVID-19 pandemic management response. This included processes for review and approval of new suppliers and the products being introduced to protect Calvary staff, patients and residents. New suppliers were required to submit information on their manufacturers, including source countries, raw materials, and proof that they met appropriate standards.

In line with our governance framework and risk management procedures, and in following the advice of the Australian Border Force for "entities to consider how the impacts of COVID-19 may increase the vulnerability of workers in their global operations and supply chains to modern slavery..." we conducted additional due diligence on our highest use suppliers' ethical sourcing policies and risk management frameworks.

As a result, we have built a large resource of supply chain information, giving us greater transparency into the PPE manufacturing process. This has been extremely valuable in identifying and managing risk within these categories, as the case study below suggests.

Case Study

Calvary had a potential short fall in the provision of critical PPE due to supply chain interruptions. A new supplier ("Supplier"), was identified as a potential source of critical PPE and able to meet some of the short fall in single use face masks.

Leveraging existing modern slavery management practices and integrating with our COVID-19 pandemic management response the organisation was able to rapidly:

- obtain relevant product documentation including source country and manufacturer
- review and validate product testing and certification
- perform physical checks and fit for purpose testing of the goods
- confirm compliance with relevant standards and product registrations
- quality check Supplier's ethical sourcing policies
- access and review the manufacturer's modern slavery policies
- validate the relevant certificates of insurance.

Given the extenuating circumstances Calvary adopted an agile approach to balancing continuity of supply whilst meeting its obligations whereby

- the Supplier agreed to, and secured approval from their manufacturer, to an audit of their manufacturer's operations
- that they would engage an independent third party auditing organisation to conduct the audit on their manufacturer and
- that the results would be made available to Calvary.

This commitment, along with the desktop review, allowed Calvary to proceed with the contracting of the supply of critical PPE whilst remaining confident that Supplier and their manufacture were able to meet their obligations under Modern Slavery.

The results of the third party audit were made available to Calvary during the 2021 reporting period, which confirmed that there were no instances of modern slavery at the manufacturing facility.



Judith Aiston, Registered Nurse at Calvary Wakefield Surgicentre.

Our People

Calvary takes pride in our commitment to be an equal employment opportunity provider, encourage workplace diversity and continue to promote equity, transparency, efficiency and a non-discriminatory approach to the recruitment, selection and appointment of staff.

As of February 2021, Calvary have 12,718 employees. Of our staff, 10,186 are female, making up approximately 80% of our workforce.

Calvary's recruitment and hiring policies are governed by our Recruitment, Selection and Appointment Procedure. This policy outlines responsibilities of hiring managers who are supported by a strong national and local Human Resources team.

Modern Slavery Gap Analysis

In 2019, Calvary conducted a gap analysis on our own organisation, and the wider Catholic community, in partnership with the Australian Catholic Anti-Slavery Network (ACAN). Our gap analysis provided insight into areas of improvement which we have since sought to rectify.

Utilising the insights from the gap analysis Calvary established a cross functional team who are responsible for developing reforms and recommending Calvary's modern slavery program; as outlined below.

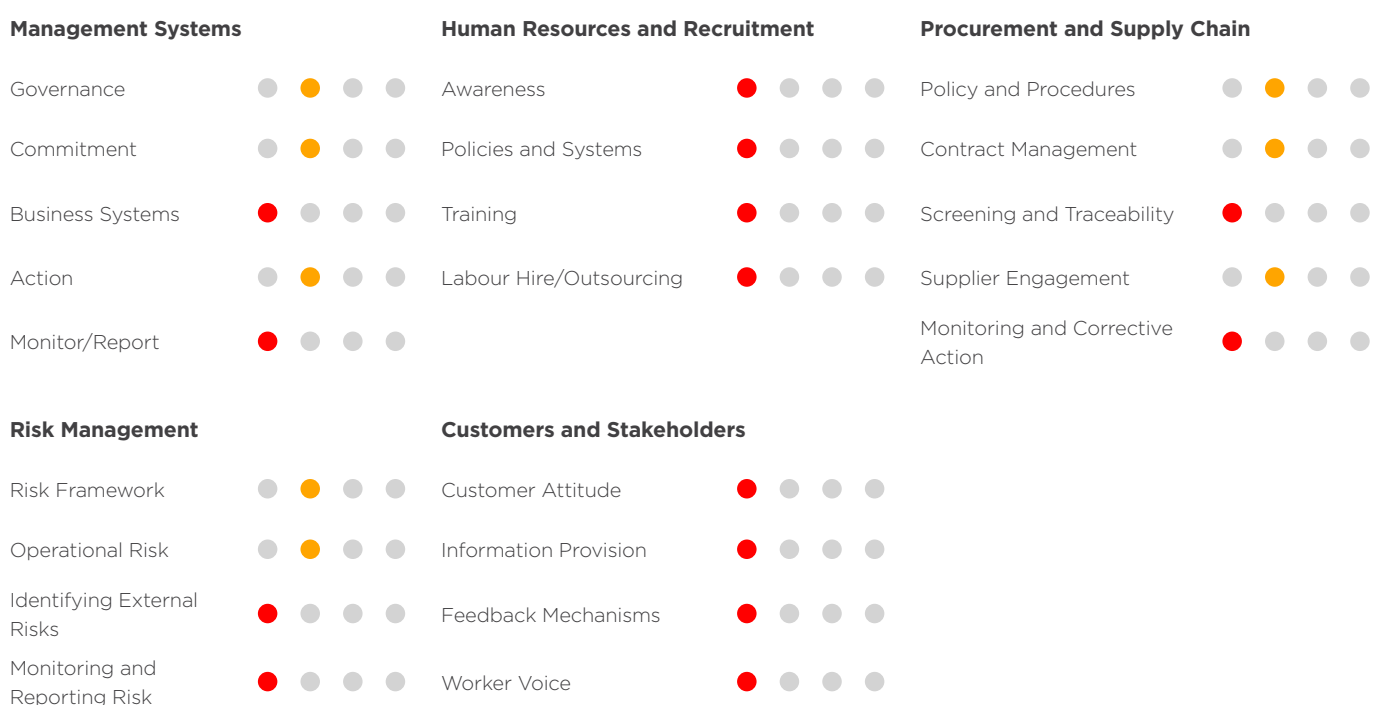
Calvary intends to repeat the gap analysis in FY22 to determine the effectiveness of our actions and implement any learning into our future work.



Kerry Bates, Registered Nurse, Calvary Mater Newcastle.

Heat Map

The heat map provides a snapshot of how we are tracking in our approach to managing modern slavery risks.



Supply Chain Risks

In 2019 and 2020, Calvary, along with the Australian Catholic Anti-Slavery Network, undertook a risk assessment on our supply chain. The risk analysis examined our top 50 suppliers by spend within high risk industries. Risk was assessed on the basis of the following indicators;

- **Industry sector** – Specific industry sectors deemed as high risk in international and national guidance documentation.
- **Commodity/product** – Specific products and commodities deemed as high risk by the US Department of Labor’s 2018 List of Goods Produced by Child and Forced Labor, the Global Slavery Index (GSI) and other international guidance materials.
- **Geographic location** – Based on estimated prevalence of modern slavery and the government responses as outlined in the 2018 GSI. While we predominantly use Australian suppliers, we recognise that our goods and services may come from countries other than those of the suppliers’ “headquarters” or registered place of business.
- **Workforce profile** – In undertaking our supplier analysis we considered the type of labour involved in the production of our goods and services, particularly where low skilled, vulnerable or migrant labour is used, or where the work is deemed as ‘3D’ work (dirty, dull or dangerous).

Based on these indicators, we identified that over 70% of potentially high risk spend is within 5 spend categories:

- Building and Construction
- Food and Beverage
- ICT Hardware

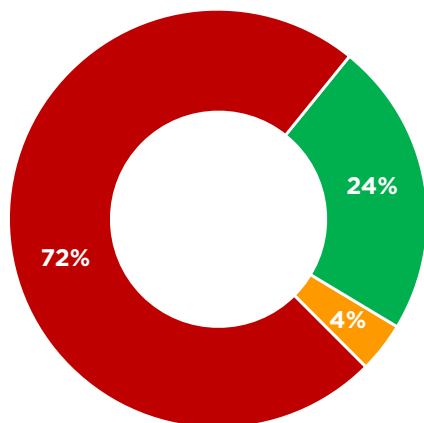
- Medical Supplies
- Waste Management

Although our focus during this reporting period was our high spend and high risk suppliers, our 2021 plan and beyond will examine a broader cross section of suppliers utilising this same risk analysis framework. We recognise that modern slavery risks exist across the supply chain irrespective of the type of spend category or the value of spend with that supplier.

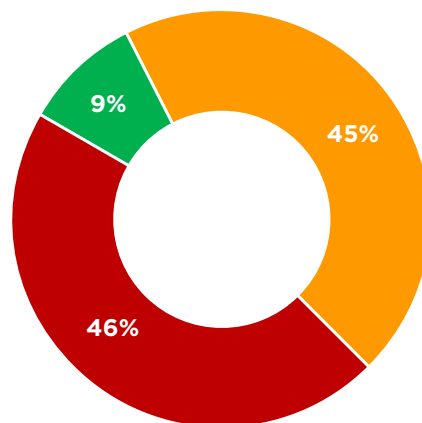


Number of Suppliers	High Risk Suppliers	Spend Categories	High Risk Categories	Total Spend	High Risk Spend
50	36	11	5	\$268,380,362	\$194,497,922

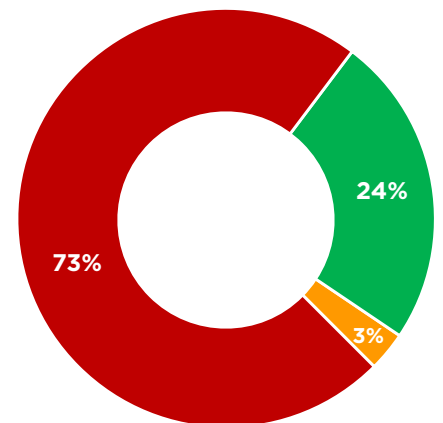
Risk by suppliers



Risk by category



Risk by spend





Reporting Criteria 4: Actions taken to assess and address risk

Calvary's primary focus to date has been to deepen our understanding of the risk of modern slavery risks in our operations and supply chain. We engage 4690 suppliers through our network of hospitals, aged care and community care services, and have 12,718 staff members. In October 2019 Calvary partnered with the Australian Catholic Anti-Slavery Network (ACAN) and have worked collectively with the Catholic Negotiating Alliance (CNA). Through these affiliations we share knowledge and resources and have developed more encompassing processes to identify and assess our risks high risk suppliers and define how we can work collaboratively with suppliers to address risks where they are identified.

Modern slavery action plan and road map

Increasing Awareness

- Calvary has implemented mandatory training for all staff involved in procurement and supplier relationship management. The training is aimed at increasing the awareness of Modern Slavery risks in our supply chain and operations. We are currently implementing a second module and work is already underway on a third module which is expected to be released mid-2021. Over this reporting period we will have collectively completed approximately 100 hours of training either in specific modules or via information sessions for staff.
- Calvary's modern slavery initiatives have also been presented to the organisation's extended leadership team, comprising of over 100 people managers, as part of our Leadership Talks program.
- Electronic communication has been released to all staff from the National CEO. The communication outlined the legislation, Calvary's approach to addressing modern slavery along with links and a point of contact provided for further information including Calvary's Corporate and Social Responsibility page; <https://www.calvarycare.org.au/about/corporate-social-responsibility/modern-slavery-act/>

Supplier Engagement

- Calvary has communicated with all current suppliers on the steps we have and are undertaking to ensure we meet, and where possible exceed, our obligations with regards to Modern Slavery legislation.
- Calvary has notified all suppliers of our expectations of them, as our partners, in supporting our efforts in addressing this issue including adhering to our Business Partner's Criteria and Ethical Procurement Policies and maintaining open and honest communications with us on this matter.

Geoff Davis, Facilities Manager at Calvary Bruce Private Hospital



(L-R): Amir Bekit, Residential Site Manager and Joseph Massih, General Manager at Ryde Retirement Community.

Our Policies and Contract Terms

- Calvary has revised its website to reflect our policies on modern slavery and ethical sourcing including:
 - Business Partner’s Criteria
 - Ethical Sourcing Policy
 - Code of Business Practice
 - Declarable Minerals List
- Calvary requires that all new contracted suppliers agree to our Business Partner’s criteria to be considered as a supplier to Calvary.

Sector collaboration

- Calvary is a member of the ACAN and has actively participated in joint activities with other Catholic organisations including the sharing of non-commercial information and analytics as part of a sector wide response to Modern Slavery.
- Calvary attended the 2019 ACAN conference on Addressing the Risk of Modern Slavery, hosted by ACAN.
- Calvary is a member of the Catholic Negotiating Alliance (CNA) and issued supplier self-assessments to our joint top 25 high risk suppliers.
- Calvary is now working with other CNA members to address any identified risks.

Remedy

Calvary is committed to ensuring it provides appropriate and timely remedy to people impacted by modern slavery in accordance with the United Nations Guiding Principles on Business and Human Rights, Commonwealth Modern Slavery Act 2018 – Guidance for Reporting Entities and relevant Australian laws. This includes “providing for, or cooperating in, actions to address harms to people and root causes to mitigate future risks if entity is found to have caused or contributed to modern slavery”.

Due to the complexity of remediation, the need for specialist resources and to ensure the most comprehensive and rights-compatible outcomes for people impacted by modern slavery, Calvary, is a founding partner of Domus 8.7 - an independent program to provide remedy to people impacted by modern slavery. Calvary’s remediation efforts will be enhanced in the future through further policy development, detailed response procedures and engagement with Domus 8.7 and other civil society stakeholders. By partnering with Domus 8.7 we can help people impacted by modern slavery achieve meaningful outcomes that can be reported on and continuously improve risk management and our response.

Where Calvary is directly linked to modern slavery by a business relationship, we are committed to working with the entity that caused the harm to ensure remediation and mitigation of its recurrence. Remediation obligations and expectations are included in contracts with high-risk suppliers who must notify and consult with Calvary to ensure victim centred remediation processes are implemented to the satisfaction of Calvary.

Calvary is a consortium partner to the Building Links program, a modern slavery grant funded by the Australian Government. Building Links targets modern slavery in the construction sector and includes deployment of an independent site-level operational grievance mechanism directly accessible to vulnerable construction workers.

When suspicions of modern slavery practises come to our attention through whistle-blower or other channels, staff will contact relevant law enforcement agencies and/or Domus 8.7 for an assessment, investigation, action planning and implementation of a remediation process.

Calvary has funded a “Remedy Pathways” module in its Modern Slavery E-Learning course that will be available to staff and other stakeholders in 2021.

Additional information about Domus 8.7 and the process applied can be found at <https://www.acan.org.au/domus87>



(L-R): Yichao (Alexandra) Sun and Ashleigh Stefanidis, Support Workers at Calvary Community Care Tasmania.



Dr Sarah Latham, Anaesthetist, Calvary John James, ACT.

Reporting Criteria 5: Effectiveness Assessment

Our modern slavery program will be reviewed every 6 months to test the effectiveness of our actions taken.

In 2020 we met all targets as detailed in this report, including:

- assessment of our supplier base to identify high risk categories of spend and affected suppliers
- release of a self-assessment survey to the top 25 high risk suppliers
- identification of areas of improvement in the high risk areas of our supply chain and in conjunction with affected suppliers developing remediation plans
- developing training programs and completing approximately 105 hours of training over 70 staff involved in procurement related activities
- reviewing, updating and developing policies and procedures to address Modern Slavery.

In 2021 and future years, we will be establishing milestones centred around:

- percentage of staff who have completed mandatory training
- number of audits conducted against suppliers
- number of supplier remediation programs completed.

In 2021, Calvary will repeat the Gap Analysis conducted in 2019 to determine the effectiveness of the actions taken during the reporting period.

Reporting Criteria 6: Process of consultation with entities owned or controlled

The Little Company of Mary Healthcare Board is the single Board which governs all entities, owned and controlled. Similarly the NELC manages all entities, owned and controlled through Regional CEOs to whom all owned and controlled service level executives report.

As the reporting entity, Calvary has developed policies, procedures and mandatory training and education materials for use by Calvary entities. These were developed in consultation with all entities to ensure the highest level of adoption and compliance.

During the Covid-19 lockdown periods, National CEO, Martin Bowles, has conducted the 'Leadership Chat Series', involving senior management from all areas of the business including all controlled entities. Calvary's modern slavery program was presented to over 100 leaders from the business units, including expectations and KPIs around training.

Reporting Criteria 7: Other relevant information

Since 2019, Calvary has been a member of the Australian Catholic Anti-Slavery Network. Along with ACAN, we have contributed to a wider risk management process across multiple industries. We participated in a two day ACAN conference in 2019, providing supplier and spend data, and combining this with other Catholic entities to build a picture of combined supply chain risk.

We are continuing with our membership of ACAN next year, as addressing the risk of modern slavery is a long term commitment.

NATIONAL OFFICE**Little Company of Mary Health Care Limited**

Level 12, 135 King Street
Sydney NSW 2000
Ph: 02 9258 1700
www.calvarycare.org.au

AUSTRALIAN CAPITAL TERRITORY**www.calvaryact.org.au****Calvary Public Hospital Bruce**

5 Mary Potter Circuit
Bruce ACT 2617
Ph: 02 6201 6111
www.calvaryact.org.au

Calvary Bruce Private Hospital

30 Mary Potter Circuit
Bruce ACT 2617
Ph: 02 6245 3100
www.calvarybruceprivate.org.au

Calvary John James Hospital

173 Strickland Crescent
Deakin ACT 2600
Ph: 02 6281 8100
www.calvaryjohnjames.org.au

Calvary Haydon Retirement Community

2 Jaeger Circuit
Bruce ACT 2617
Ph: 02 6264 7400
www.calvaryhaydon.org.au

SOUTH AUSTRALIA**www.calvarysa.org.au****Calvary Health Care South Australia
Shared Services**

207 Wakefield Street
Adelaide SA 5000
Hospitals Ph: 08 8405 3305
Community Care Ph: 08 8271 7212
www.calvarysa.org.au

Calvary Adelaide Hospital

120 Angas Street
Adelaide SA 5000
Ph: 08 8227 7000
www.calvaryadelaide.org.au

Calvary North Adelaide Hospital

89 Strangways Terrace
North Adelaide SA 5006
Ph: 08 8239 9100
www.calvarynorthadelaide.org.au

Calvary Wakefield Hospital Surgicentre

Level 3, 120 Angas Street
Adelaide SA 5000
Ph: 08 8405 3600
www.calvarywakefieldsurgicentre.org.au

Calvary Central Districts Hospital

25-37 Jarvis Road
Elizabeth Vale SA 5112
Ph: 08 8250 4111
www.calvarycentraldistricts.org.au

**Calvary Flora McDonald Retirement
Community**

206 Sir Donald Bradman Drive
Cowandilla SA 5033
Ph: 08 8159 7000
www.calvaryfloramcdonald.org.au

Calvary St Catherine's Retirement Community

6-12 Coneybeer Street
Berri SA 5343
Ph: 08 8582 1444
www.calvarystcatherines.org.au

TASMANIA**www.calvarytas.org.au****Calvary Lenah Valley Hospital**

49 Augusta Road
Lenah Valley TAS 7008
Ph: 03 6278 5333
www.calvarylenahvalley.org.au

Calvary St John's Hospital

30 Cascade Road
South Hobart TAS 7004
Ph: 03 6223 7444
www.calvarystjohns.org.au

Calvary St Luke's Hospital

24 Lyttleton Street
Launceston TAS 7250
Ph: 03 6335 3333
www.calvarystlukes.org.au

Calvary St Vincent's Hospital

5 Frederick Street
Launceston TAS 7250
Ph: 03 6332 4999
www.calvarystvincents.org.au

NEW SOUTH WALES**www.calvarynsw.org.au****HUNTER NEW ENGLAND****Calvary Mater Newcastle
Public Hospital**

Edith Street
Waratah NSW 2298
Ph: 02 4921 1211
www.calvarymater.org.au

**Calvary Retirement Communities
Shared Services**

Suite 5, Level 1, 342-344 Main Road
Cardiff NSW 2285
Ph: 02 4954 1800 / 1800 222 000
www.calvaryretirement.org.au

Calvary Cessnock Retirement Community

19 Wine Country Drive
Cessnock NSW 2325
Ph: 02 4993 9000
www.calvarycessnock.org.au

Calvary St Joseph's Retirement Community

240 Maitland Road
Sandgate NSW 2304
Ph: 02 4967 0600
www.calvarystjosephs.org.au

Calvary Cooina Retirement Community

42 Bathurst Street
Singleton NSW 2330
Ph: 02 6572 1537
www.calvarycooina.org.au

Calvary Mt Carmel Retirement Community

9 Dwyer Street
Maitland NSW 2320
Ph: 02 4932 0350
www.calvarymtcarmel.org.au

Calvary Muswellbrook Retirement Community

15 Cassidy Avenue
Muswellbrook NSW 2333
Ph: 02 6542 4800
www.calvarymuswellbrook.org.au

Calvary Nazareth Retirement Community

1 Vincent Street
Belmont North NSW 2280
Ph: 02 4947 0047
www.calvarynazareth.org.au

Calvary St Francis Retirement Community

12 Gleeson Crescent
Eleebana NSW 2282
Ph: 02 4942 7477
www.calvarystfrancis.org.au

**Calvary St Martin de Porres Retirement
Community**

26 Lorna Street
Waratah NSW 2298
Ph: 02 4968 2244
www.calvarystmartindeporres.org.au

Calvary St Paul's Retirement Community

54 River Street
Cundletown NSW 2430
Ph: 02 6553 9219
www.calvarystpauls.org.au

Calvary Tanilba Shores Retirement Community

71-74 Tanilba Avenue
Tanilba Bay NSW 2319
Ph: 02 4984 5922
www.calvarytanilbashores.org.au

Calvary Ephesus Retirement Community

88 Dickson Street
Lambton NSW 2299
Ph: 1800 222 000
www.calvaryephesus.org.au

Calvary St Luke's Retirement Community

204-206 Darby Street
Cooks Hill NSW 2300
Ph: 1800 222 000
www.calvarystlukesretirement.org.au

Calvary Tours Terrace Retirement Community

242 Lawson Street
Hamilton South NSW 2303
Ph: 1800 222 000
www.calvarytoursterrace.org.au

SYDNEY**Calvary Health Care Kogarah
Public Hospital**

91-111 Rocky Point Road
Kogarah NSW 2217
Ph: 02 9553 3111
www.calvarykogarah.org.au

Calvary Ryde Retirement Community

678 Victoria Road
Ryde NSW 2112
Ph: 02 8878 1400
www.calvaryryde.org.au

RIVERINA**Calvary Riverina Hospital**

26-36 Hardy Avenue
Wagga Wagga NSW 2650
Ph: 02 6925 3055
www.calvaryriverina.org.au

VICTORIA**www.calvaryvic.org.au****Calvary Health Care Bethlehem
Public Hospital**

152 Como Parade West
Parkdale VIC 3195
Ph: 03 9596 2853
www.calvarybethlehem.org.au

Calvary Community Care Head Office

551 Blackburn Road
Mt Waverley VIC 3149
Ph: 1300 302 588
www.calvarycommunitycare.org.au

Operates in Victoria, New South Wales, ACT,
South Australia, Tasmania, Northern Territory
and Tiwi Islands