



Calvary

Trevu House

Hospitals | Home Care | Virtual Care | Retirement Living | **Residential Aged Care**



Live in a beautiful heritage home set amongst the lush northern suburbs of Adelaide.

Within its historic walls, every room here has been given a modern makeover and inviting common areas host leisure activities and opportunities to connect.

Living here, your health, wellbeing and independence will be our top priority every day. Because at Calvary, caring for others is what we care about most.

Start a new chapter at Calvary Trevu House.



welcome



Set in beautiful, sprawling gardens, this majestic home has a vibrant and social community at its heart.

Sunlit strolls, courtyard catch-ups or quiet time will become your new norm.



Welcome friends and family to any of the sunny day-lounges—join group activities or enjoy a cup of tea and a chat with your fellow residents.



lifestyle

Flavours and tastes
to tempt you



A cup of tea
and company



Relax and enjoy



Delicious food at your service.



Enjoy a taste-filled
menu prepared by
our on-site chef.

Whether it's a hearty,
farmhouse-style beef hot pot for
lunch, or a roast chicken with your
favourite vegetables for dinner,
you'll never get bored with our
ever-evolving seasonal menu.

Our chefs take great pride in
designing a menu that caters for
varied tastes, and great care in
preparing all meals, ensuring all
dietary requirements are followed.

Dine with your fellow residents
in our communal dining area
or in the comfort of your own room
with meals delivered to your door.
Indoors and out, you'll always
find somewhere to enjoy a cuppa
and a chat.

breakfast

- Continental breakfast spread including cereals and porridge
- Fresh fruits with yoghurt

lunch

- Farmhouse beef hot pot
- Cinnamon pears with custard

dinner

- Hearty Scotch broth
- Roast chicken with vegetables
- Pavlova served with berries



From arts and crafts and Men's Shed to barbeques and bus trips, there's always something to keep you busy.



You'll always look good and feel great after a visit to the salon.



body mind



*"With our own lovely salon, I always walk out with a smile on my face."
- Calvary Resident*

self-care



Do what you love or discover something new.

Our personalised lifestyle options support your health and wellbeing.

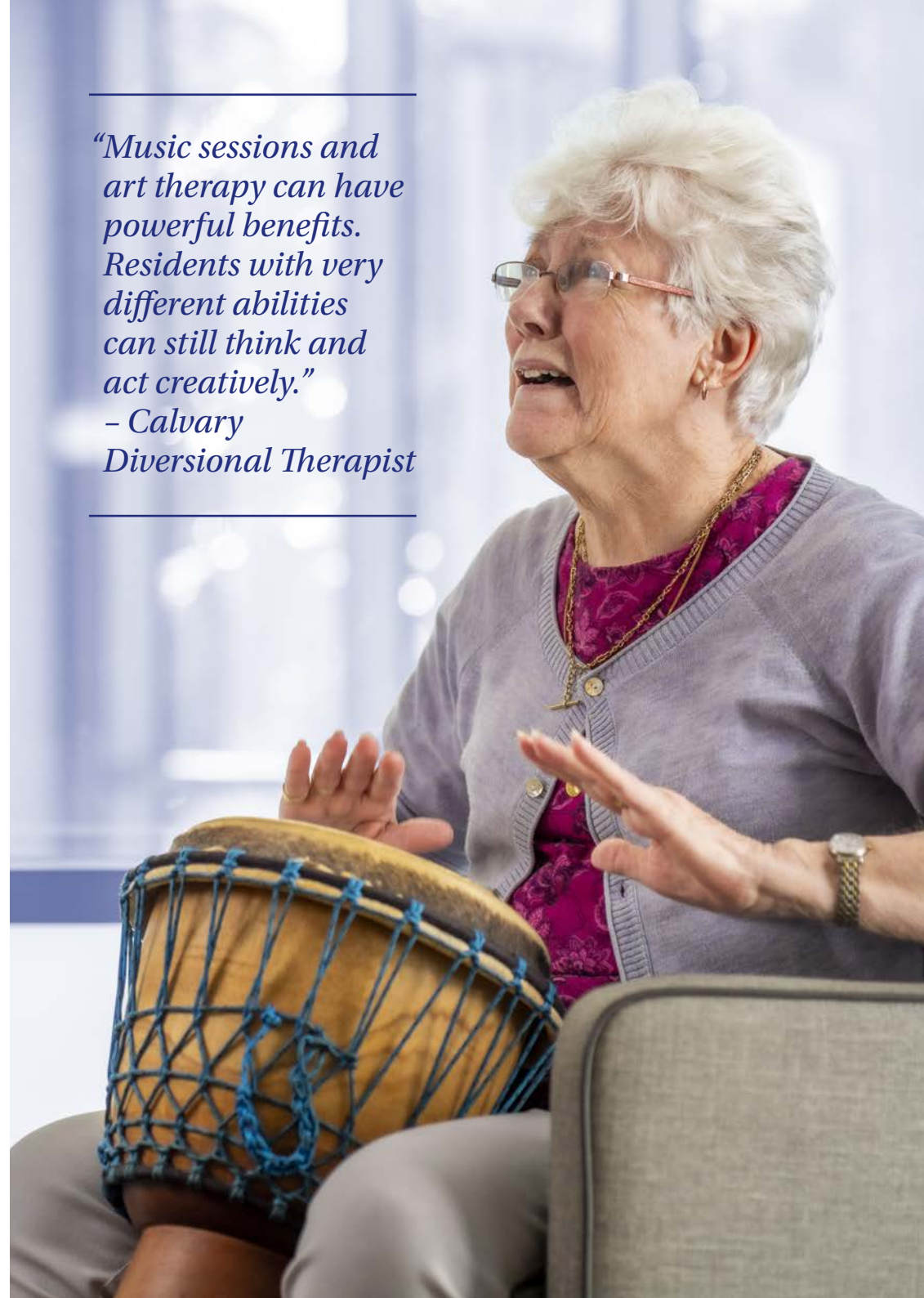
We provide a range of activities designed to keep mind and body active and deliver a healthy dose of enjoyment. There's something for all residents, including those with reduced abilities. We know that everyone benefits from keeping active, being creative and having fun.



Here you'll find lots of options to match your interests and make your day. Try a new activity that brings out your creative side. Join in on group activities such as exercise classes, table games, movie nights, music sessions and more. We keep strong ties to the community around us with regular outings, and invitations to an array of visitors to keep things interesting.

“Music sessions and art therapy can have powerful benefits. Residents with very different abilities can still think and act creatively.”

*– Calvary
Diversional Therapist*



keeping you safe



Providing a lifetime of care is our life's work.

At Calvary Trevu House we deliver the highest levels of clinical and residential care in a comforting and modern environment.

We have a stringent Covid-19 Outbreak Strategy and are committed to keeping our residents and staff safe. Each of our residents has access to a 24-hour emergency call system, so you can rest assured that someone is always on hand should you need support in your new home.

We offer a level of care that is personalised for each resident, including access to preferred GP and therapy plans tailored to meet everyday needs.

We are always seeking new ways to learn and to improve our services, quality standards and safety of care. We know well that working in partnership with our patients, residents and clients will help to ensure the best possible experience for all.



**you
matter
to us**

Compassion is at the heart of all we do.

Our goal?

To deliver excellent care, every day.

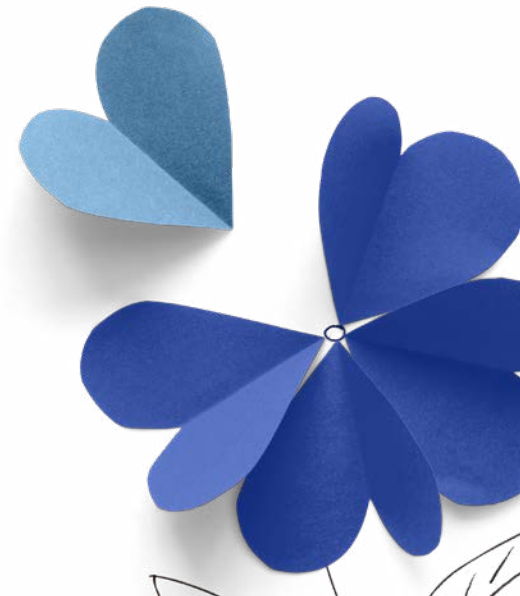
We are proud that the majority of the staff who work at Calvary Trevu House are Calvary employees. This allows us to build strong teams and provide a consistent standard of care.

All staff undergo a rigorous Calvary-led recruitment process and continue to be trained and educated on the job.

We follow the principle that happy staff means happy residents and we are united by our common goal to deliver exceptional care to our residents.

We are also united in our motivation for care—which is beautifully summed up in these heartfelt comments by one of our Clinical Coordinators:

“Trying to make a difference in our residents’ lives is my biggest motivation. It’s a great feeling to provide care with dignity and respect. It gives me peace of mind, and it gives that also to their families, knowing that their loved one is in good hands.”



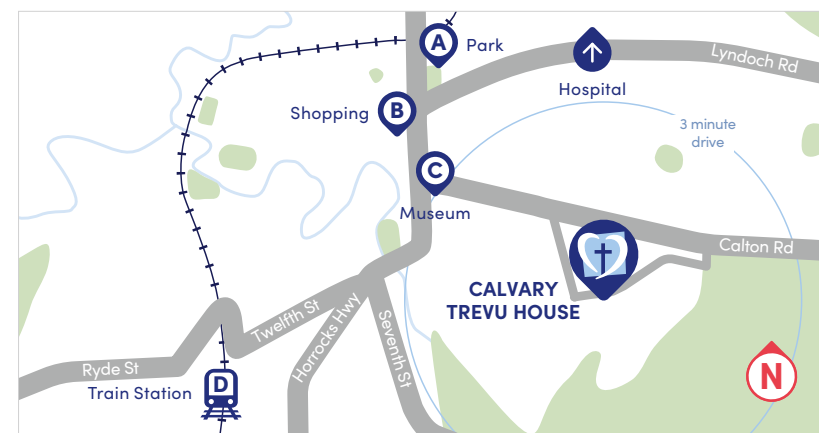


love where you live

Staying in or going out? Here, you will enjoy the best of both.

Calvary Trevu House sits in a quiet street, at the gateway to the breathtaking valley region yet close to the heart of historic Gawler. Local shops, cafes, parks, transport and amenities are all within easy reach, and we plan regular outings to explore all the attractions of the area.

When it comes to your accommodation, enjoy the privacy of a spacious single room with ensuite, and the reassurance of 24-hour care. Community is at the heart of life at Calvary Trevu House, which is why you'll find comfortable shared spaces for spending time with others.



- A** Pioneer Park
- B** Gawler Shopping Precinct
- C** Gawler National Trust Museum
- D** Gawler Train Station
- Hospital** Gawler Health Service Hospital 4 minute drive

Amenities and care.

- Private rooms
- Physio and podiatry
- Speech therapy
- Aromatherapy
- Gardens and courtyards
- Short-term Respite
- Rehabilitation Care
- Residential Aged Care
- Permanent Care

Short-term Respite

This respite gives other carers a break from the physical care of a loved one, or provides care for an elderly person leaving hospital but not yet ready to return home. Usually this is a two-week minimum stay. Meals, laundry, cleaning and clinical care are provided. Residents are invited to join the leisure and lifestyle activities available.

Rehabilitation Care

Our Rehabilitation Care provides short-term support for older people following a hospital stay. The major goal of rehabilitation is to achieve functional mobility and self-care with minimal assistance. Our on-site physiotherapist and care coordinator work together to tailor a comprehensive rehabilitation program to best suit individual requirements.

Residential Aged Care

Residential Aged Care is the term given to permanent living within one of our homes. For our residents we provide 24-hour care, beautiful and homely accommodation, meals and domestic services, as well as social and mental stimulation through the leisure and lifestyle activities available. Care is tailored to the individual.





personal

Not sure where to start?
Calvary Assist will help you to navigate
to the right care for your needs.



support

Enquire today and speak with our friendly staff
at Calvary Assist: **1800 52 72 72**

Monday to Friday, 9am–5pm



**our
heritage**


Continuing the Mission of the Sisters of the Little Company of Mary.

It all started with six courageous sisters on a mission to care for those in need.

In an abandoned stocking factory in Nottingham, England, Venerable Mary Potter and the Sisters of the Little Company of Mary began their mission of caring for the sick and dying. Inspired by the women who stood steadfastly with Jesus as he died upon the cross at Calvary, six courageous Sisters

sailed into Sydney in 1885 where they immediately began to care for those in need. Thus began Calvary's enduring legacy of care in Australia. Today, we continue their mission in that same Spirit of Calvary in our hospitals, home and virtual care services, retirement living and residential aged care homes.



A pair of hands is shown from the top, cupping a light-colored heart-shaped card. The card has the text "Always handling with care and patience." written on it in a dark blue, serif font. The background is a light blue gradient with decorative white dotted patterns and a row of blue circles at the top right.

*Always handling
with care
and patience.*



Trevu House

1-13 Deland Avenue,
Gawler East SA 5118

Enquire today with Calvary Assist: **1800 52 72 72**
To view our other locations, visit: calvarycare.org.au