



Bulk carrier safety: be aware of vessel structural limitations

Not long ago, a member's vessel was detained at load port because the density of the solid bulk cargo being loaded exceeded the maximum allowable cargo density for that particular vessel. Recently, we were also approached by another member because the master of a capsize bulk carrier had refused charterer's request for alternative hold loading due to serious concern about the ship's safety.

Published 08 December 2022

Written by Bruce Liu

The information provided in this article is intended for general information only. While every effort has been made to ensure the accuracy of the information at the time of publication, no warranty or representation is made regarding its completeness or timeliness. The content in this article does not constitute professional advice, and any reliance on such information is strictly at your own risk. Gard AS, including its affiliated companies, agents and employees, shall not be held liable for any loss, expense, or damage of any kind whatsoever arising from reliance on the information provided, irrespective of whether it is sourced from Gard AS, its shareholders, correspondents, or other contributors.

The above instances appear to have come about due to a lack of knowledge of the CSR-BC Class Notations.

What are the CSR-BC Class Notations?

CSR-BC means the Common Structural Rules for Bulk Carriers which were adopted by the International Association of Classification Societies (IACS) in December 2005 and came into effect on 1 April 2006. CSR-BC Class notations are assigned to bulk carriers of 150 meters or above in length based on the service features of dry bulk cargo densities and cargo hold loading patterns. There are three primary class notations for CSR bulk carrier: BC-A, BC-B and BC-C. These are stated on a vessel's class certificate and loading manual.

| Class | Sample Class Notation |
|-------------------------------------|---|
| Bureau Veritas | CSR CPS(WBT) BC-A (holds 2,4 may be empty) ESP GRAB(25) Veristar HULL, AUT-UMS, MON-SHAFT, GREEN PASSPORT, FORS, INWATERSURVEY Service Restriction: Unrestricted navigation |
| ABS | A1, Bulk Carrier, BC-A 2,4,6 , ESP, AMS, ACCU, CSR |
| China Classification | CSA Bulk Carrier BC-A(Holds Nos.2,4 & 6 may be Empty) ;ESP; In-Water Survey>Loading Computer (S, I, G); BWMP GRAB(20);CSR; AUT-0;CMS; |
| Korean Register | KRS1 BULK CARRIER ESP (CSR) BC-A (Hold Nos. 2, 4, & 6 may be empty) GRAB(25) SeaTrust (HCM) CLEAN1 IWS ERS LG LI UMA BWE STCM |
| Lloyd's Register | bulk carrier CSR BC-A ; GRAB(25);Nos. 2, 4 & 6 holds may be empty;ESP;ShipRight (CM, ACS(B));*IWS:LI LR Machinery Class: LR Maltese Cross LMC LR Machinery Notations: UMS (Unmanned Machinery Spaces)Fee Numeral: 15676 LR Hull Notes: 9BH WB37452.5T |
| Nippon Kaiji Kyokai | NS*(CSR, BC-A, BC-XII , GRAB 20, PSPC-WBT, NC)(ESP)(IWS)(PSCM)(IHM), Strengthened for heavy cargo loading where hold nos. 2,4 & 6 may be empty |
| Det Norske Veritas | 100 A5 Bulk carrier (holds 2, 4, 6 may be empty) BC(A) CSR DBC ESP Grab (20 t) IW NAV-O |
| Indian Register of Shipping | SUL BULK CARRIER, ESP CSR, BC-A "STRENGTHENED FOR HEAVY CARGOES, HOLD NO. 2, 4, 6 & 8 MAY BE EMPTY" ; GRAB (30), LOAD COMP(3), INWATER SURVEY, IY, SYJ, TCM, BWE(5.0) & BWT NK: Special Survey Date: 2019-04-08 Class Notation: NS*(CSR, BC-A, BC-XII, GRAB 30, PSPC-WBT, 1C)(ESP)(IWS)(PSCM) / MNS* CHG, MPP, LSA, M0, AFS, BWM |
| Registro Italiano Navale | C+ Bulk carrier ESP; BC-A - allowed combination of specified empty holds - heavy cargo (+)AUT-UMS Service Restriction: unrestricted navigation |

Sample Class Notations of IACS Societies showing CSR-BC (subject to change over time)

What does each CSR-BC Class Notation mean?

Simply put, the CSR-BC Class Notations define both the range of cargo density and the loading conditions for bulk carriers, as illustrated in the table below.

| Service features | Class Notations | | |
|-----------------------------------|-----------------|--------------|------|
| | BC-A | BC-B | BC-C |
| Robustness level | High | Intermediate | Low |
| Cargo Density (t/m ³) | ≥1.0 | ≥1.0 | ≤1.0 |
| Homogeneous Load (at max) | | | |

The information provided in this article is intended for general information only. While every effort has been made to ensure the accuracy of the information at the time of publication, no warranty or representation is made regarding its completeness or timeliness. The content in this article does not constitute professional advice, and any reliance on such information is strictly at your own risk. Gard AS, including its affiliated companies, agents and employees, shall not be held liable for any loss, expense, or damage of any kind whatsoever arising from reliance on the information provided, irrespective of whether it is sourced from Gard AS, its shareholders, correspondents, or other contributors.

draught)

The information provided in this article is intended for general information only. While every effort has been made to ensure the accuracy of the information at the time of publication, no warranty or representation is made regarding its completeness or timeliness. The content in this article does not constitute professional advice, and any reliance on such information is strictly at your own risk. Gard AS, including its affiliated companies, agents and employees, shall not be held liable for any expense, or damage of any kind whatsoever arising from reliance on the information provided, irrespective of whether it is sourced from Gard AS, its shareholders, correspondents, or other contributors.

Alternative Load

Yes

Yes

Yes

(at max draught)

The information provided in this article is intended for general information only. While every effort has been made to ensure the accuracy of the information at the time of publication, no warranty or representation is made regarding its completeness or timeliness. The content in this article does not constitute professional advice, and any reliance on such information is strictly at your own risk. Gard AS, including its affiliated companies, agents and employees, shall not be held liable for any loss, expense or damage of any kind whatsoever arising from reliance on the information provided, irrespective of whether it is sourced from Gard AS, its shareholders, correspondents, or other contributors.

Block Load (at max draught)

The information provided in this article is intended for general information only. While every effort has been made to ensure the accuracy of the information at the time of publication, no warranty or representation is made regarding its completeness or timeliness. The content in this article does not constitute professional advice, and any reliance on such information is strictly at your own risk. Gard AS, including its affiliated companies, agents and employees, shall not be held liable for any loss, expense, or damage of any kind whatsoever arising from reliance on the information provided, irrespective of whether it is sourced from Gard AS, its shareholders, correspondents, or other contributors.

Yes

The information provided in this article is intended for general information only. While every effort has been made to ensure the accuracy of the information at the time of publication, no warranty or representation is made regarding its completeness or timeliness. The content in this article does not constitute professional advice, and any reliance on such information is strictly at your own risk. Gard AS, including its affiliated companies, agents and employees, shall not be held liable for any loss, expense, or damage of any kind whatsoever arising from reliance on the information provided, irrespective of whether it is sourced from Gard AS, its shareholders, correspondents, or other contributors.

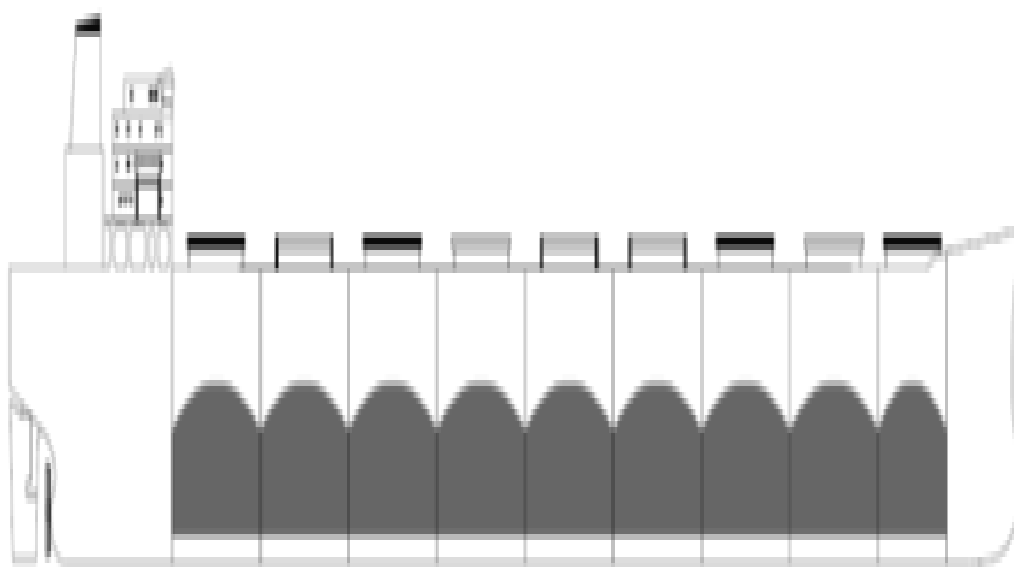
No

The information provided in this article is intended for general information only. While every effort has been made to ensure the accuracy of the information at the time of publication, no warranty or representation is made regarding its completeness or timeliness. The content in this article does not constitute professional advice, and any reliance on such information is strictly at your own risk. Gard AS, including its affiliated companies, agents and employees, shall not be held liable for any loss, expense, or damage of any kind whatsoever arising from reliance on the information provided, irrespective of whether it is sourced from Gard AS, its shareholders, correspondents, or other contributors.

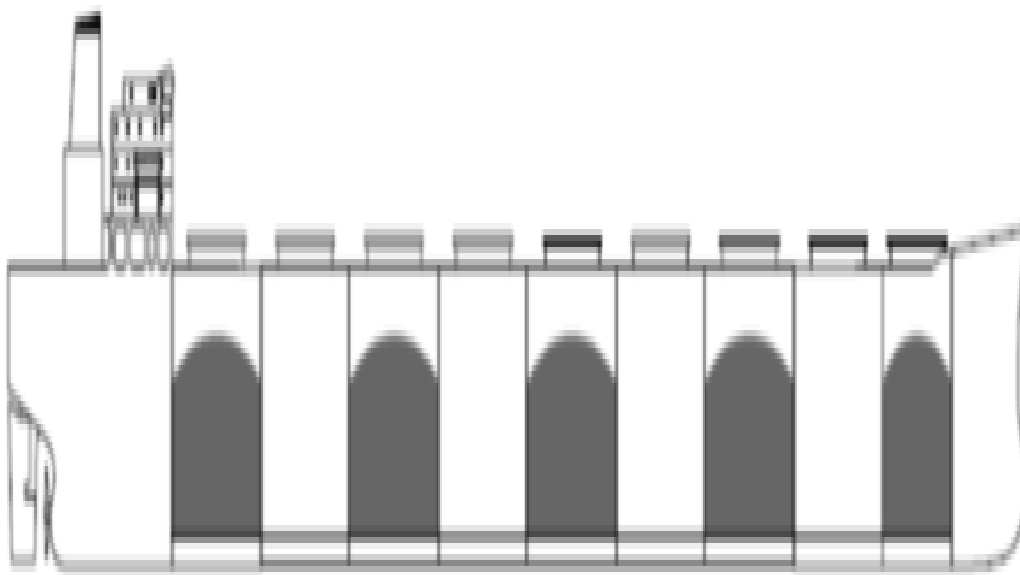
No

The information provided in this article is intended for general information only. While every effort has been made to ensure the accuracy of the information at the time of publication, no warranty or representation is made regarding its completeness or timeliness. The content in this article does not constitute professional advice, and any reliance on such information is strictly at your own risk. Gard AS, including its affiliated companies, agents and employees, shall not be held liable for any loss, expense, or damage of any kind whatsoever arising from reliance on the information provided, irrespective of whether it is sourced from Gard AS, its shareholders, correspondents, or other contributors.

Bulk carriers with a BC-A Class Notation are the most robust of the three. They are designed to carry solid bulk cargoes with a density of 1.0 t/m³ and above up to 3 t/m³ or maximum cargo density indicated in the loading manual. The cargo holds that may be empty at maximum draughts are normally indicated in parenthesis suffixed to the class notation. Such vessels can be loaded in homogenous, alternative or block loading conditions at maximum draught. Sometimes compromises have to be made. For example, when carrying heavy cargo, alternative loading may be used to reduce the metacentric height so as to ease the ship's rolling motion for structural safety and crew's comfort during the voyage.



Homogeneous Hold Loading Condition (Fully Loaded) extracted from [the IACS document Rec46](#)



Alternative Hold Loading Condition (Fully Loaded) extracted from [the IACS document Rec46](#)

Bulk carriers with BC-B Class Notation are less robust than BC-A ships. Although they are allowed to carry dry bulk cargo with similar density specifications, they can only be loaded in homogeneous condition at maximum draught. Both BC-A and BC-B vessels can carry cargo with a density of less than 1.0 t/m³.

Bulk carriers with BC-C Class Notation are the least robust of the three. The nominal cargo density carried by such vessels must be less than 1.0 t/m³. Like BC-B ships they can be fully loaded only in homogeneous condition.

How does CSR-BC Class Notations affect bulk carrier safety?

The Class Notation A, B and C must not be confused with Group A, B and C of cargo as defined in the International Maritime Solid Bulk Cargo (IMSBC) Code. The Class Notations are about the construction of the ship itself, while the IMSBC Code classification relates to the cargo characteristics. However, it is important to understand the full implications of both classifications as related to the operations of vessels, the primary purpose of which is to transport cargo.

CSR-BC Class Notations are assigned to bulk carriers under CSR-BC. Vessels with different Class Notations are designed and constructed differently so they must be operated in compliance with the applicable service features. If a vessel loads a cargo with higher density than the maximum allowable cargo density, it may cause structural failures to the vessel. Even when a vessel loads a cargo the nominal density of which is within the permissible limit, if the loading condition is not followed, structural failure is also likely to occur.

The information provided in this article is intended for general information only. While every effort has been made to ensure the accuracy of the information at the time of publication, no warranty or representation is made regarding its accuracy or completeness. The user assumes full responsibility for the use of the information. Gard AS, including its affiliated companies, agents and employees, shall not be held liable for any loss, expense, or damage of any kind whatsoever arising from reliance on the information provided, irrespective of whether it is sourced from Gard AS, its shareholders, correspondents, or other contributors.

Ship operators and masters usually refer to the IMSBC Code together with vessel's Statement (Document) of Compliance for Carriage of Cargo in Bulk and Loading Manual before accepting a consignment. Although there is nothing wrong with that, the first priority should be to check the vessel's class status or limitations. Under the IMSBC Code, a solid bulk cargo with a stowage factor of **0.56m³/t or less** is defined as a **High-density solid bulk cargo**, while chapter XII of SOLAS puts it more explicitly as solid bulk cargos having a density of **1780 kg/m³ and above** as evidenced by the equilateral triangular marks on the side shell at midships of certain bulk carriers. However, it should be noted that for individual vessels, the cargo does not have to be that heavy to cause structural failure.

Recommendations

1. Verify that the ship is “cargo worthy”

Ship operators and masters may have experience with several types of bulk carriers. But new bulkers may be introduced into the fleet and masters may be sent on different types of bulk carriers. It should be noted that previous experience does not necessarily apply to “new” vessels. It is important to be familiar with the vessel's structural limitations. Before accepting a consignment, it is always good practice to ask the question if the vessel is suitable for the carriage of the intended cargo with supporting cargo documents to show the stowage factor / cargo density and other physical properties. This can be easily done by checking the vessel's class certificate which sets out the structural limitations.

2. Follow Applicable Service Features

When a ship is deployed to carry the cargo, proper planning of cargo operations is essential to ensure the safety of vessel. The applicable service features stipulated by Class Notations must be complied with. For all bulk carriers, regardless of the robustness indicated by class notations, it is important to control high-capacity loading of solid bulk cargoes, especially heavy cargo, through efficient communication between ship and terminal to prevent the vessel's structure being overstressed.

Useful links/references:

IACS - Common Structural Rules for Bulk Carriers and Oil Tankers: <https://www.iacs.org.uk/publications/common-structural-rules/csr-for-bulk-carriers-and-oil-tankers/>

IACS Recommendations No.46: Guidance and Information on Bulk Cargo Loading and Discharging to Reduce the Likelihood of Over stressing the Hull Structure:

<https://www.iacs.org.uk/download/10543>

ABS: Common Structural Rules for Bulk Carriers: <http://www.axelzone.ro/storage/itm/>

shareholders, correspondents, or other contributors.

DNV Ship rules Pt.1 Ch.2 – Class Notations: <https://rules.dnv.com/docs/pdf/dnvpmp/ruleship/2011-01/ts102.pdf>